

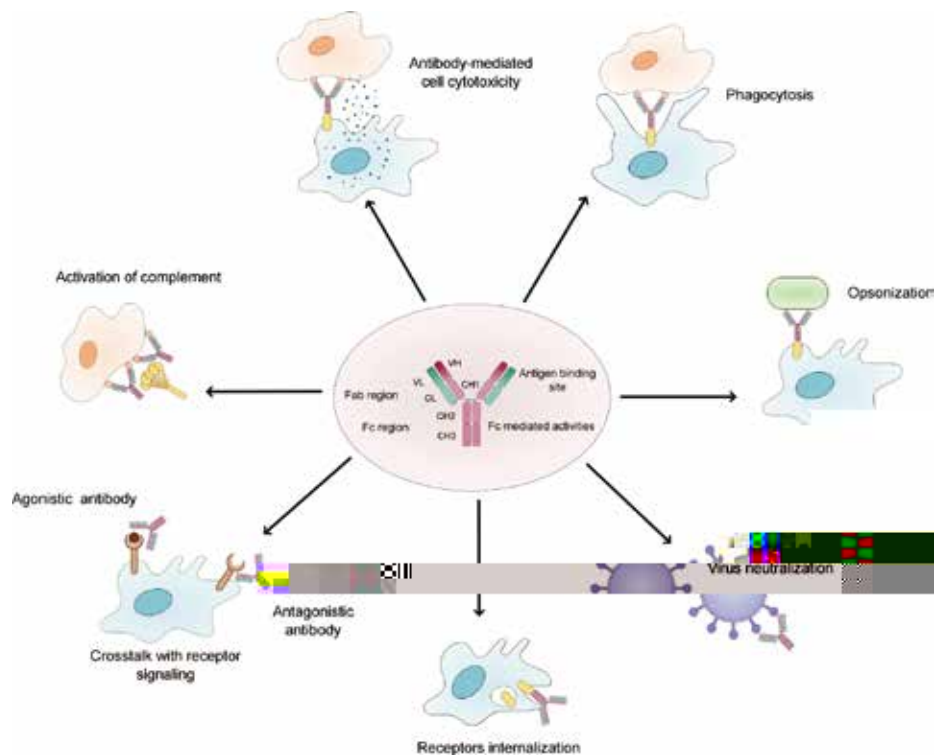
ADC

CMC

GLP

2023

32



Overview of the natural function of antibodies^[1]



VHH

VHH

ELISA

B

B

B

B

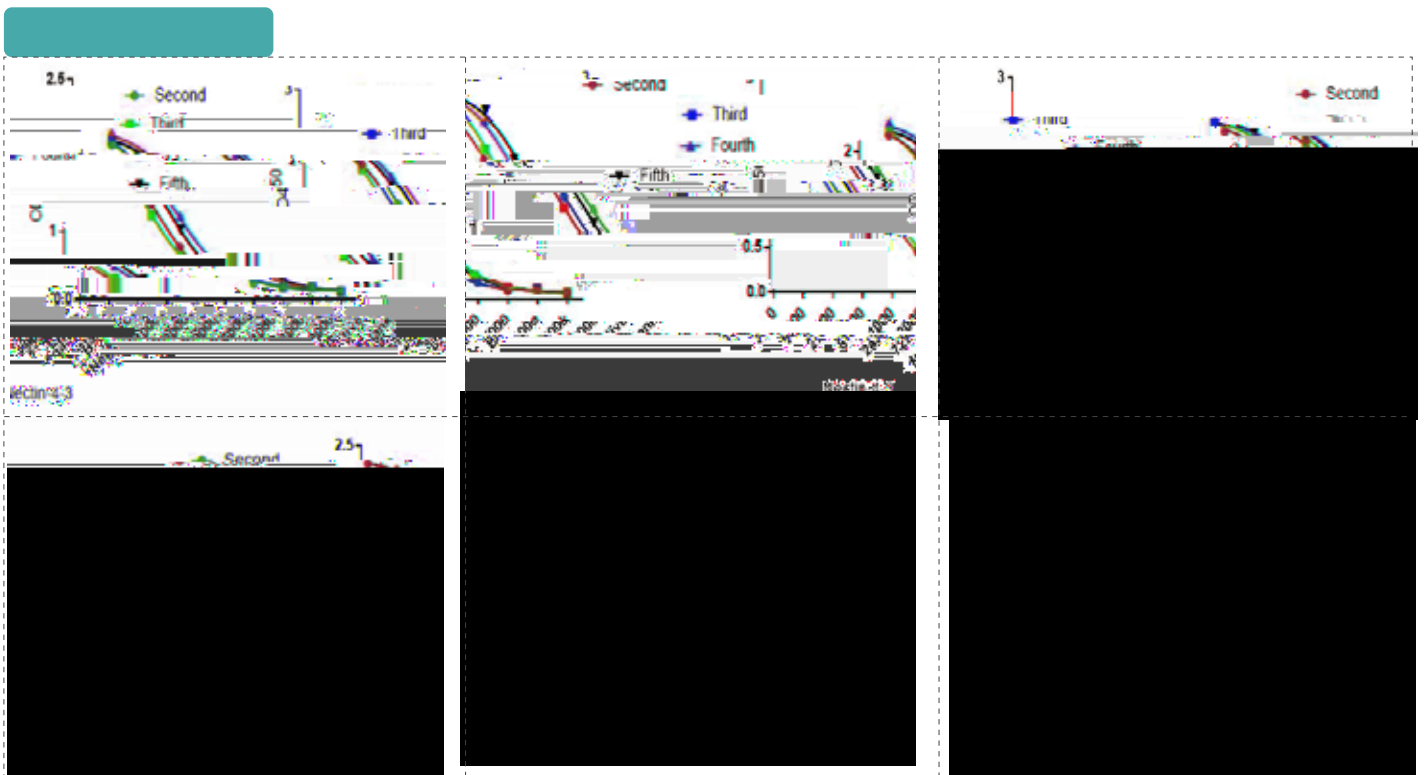
Ig

, ,

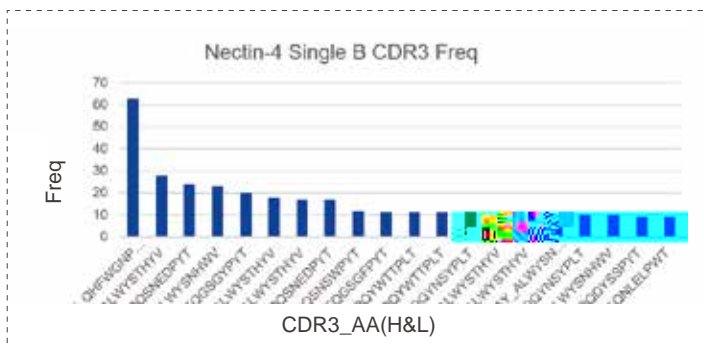
B



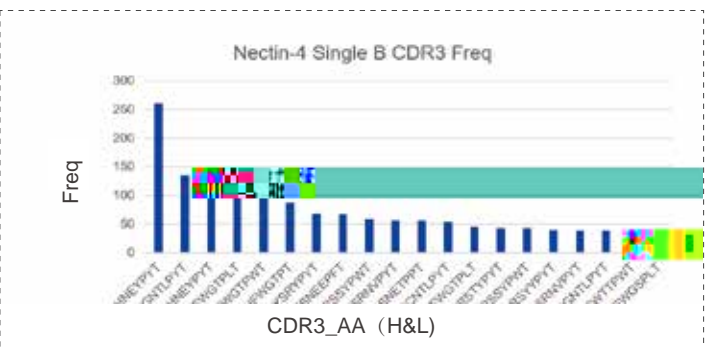
B



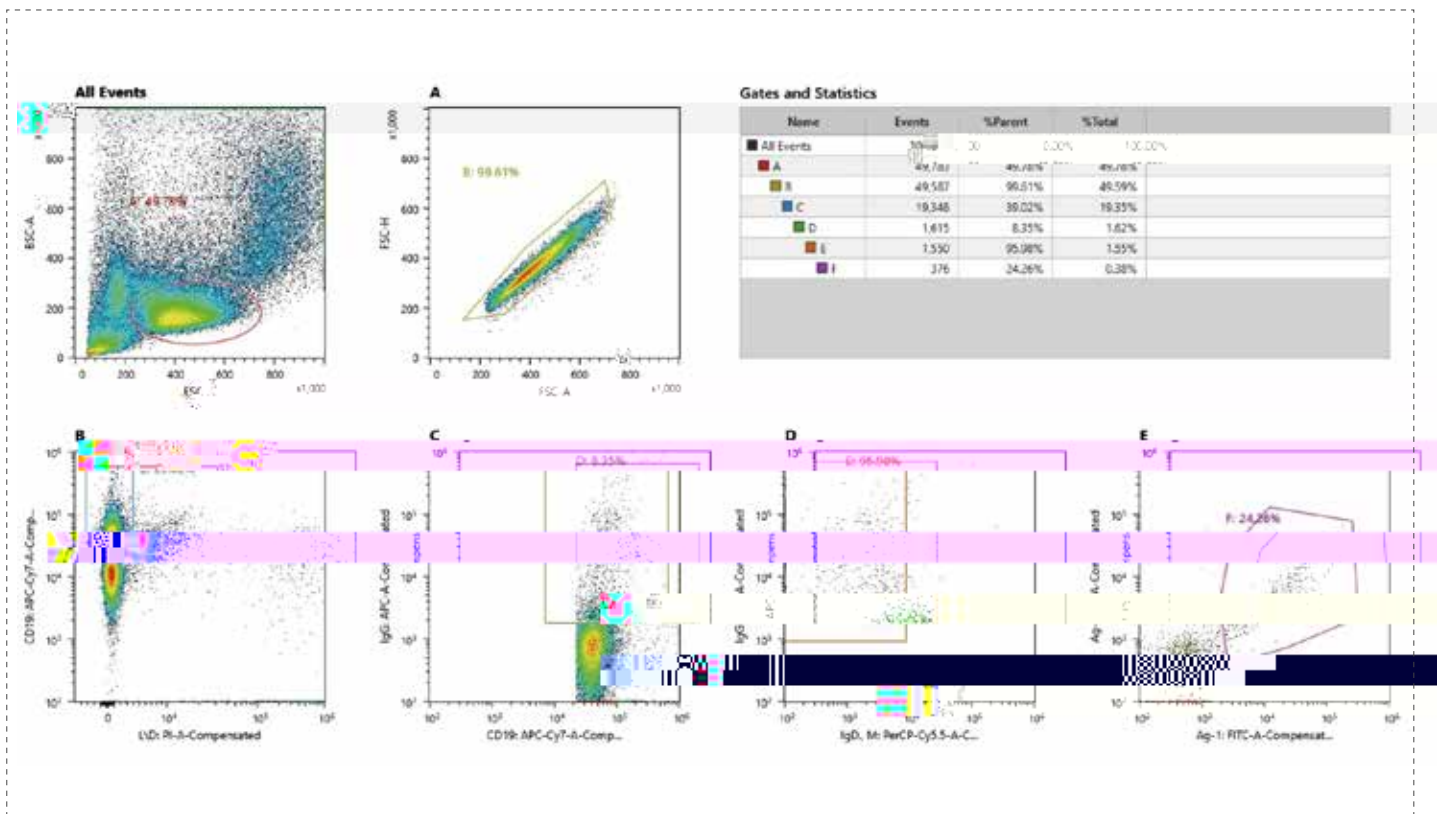
Nectin-4 Mouse Serum Titer



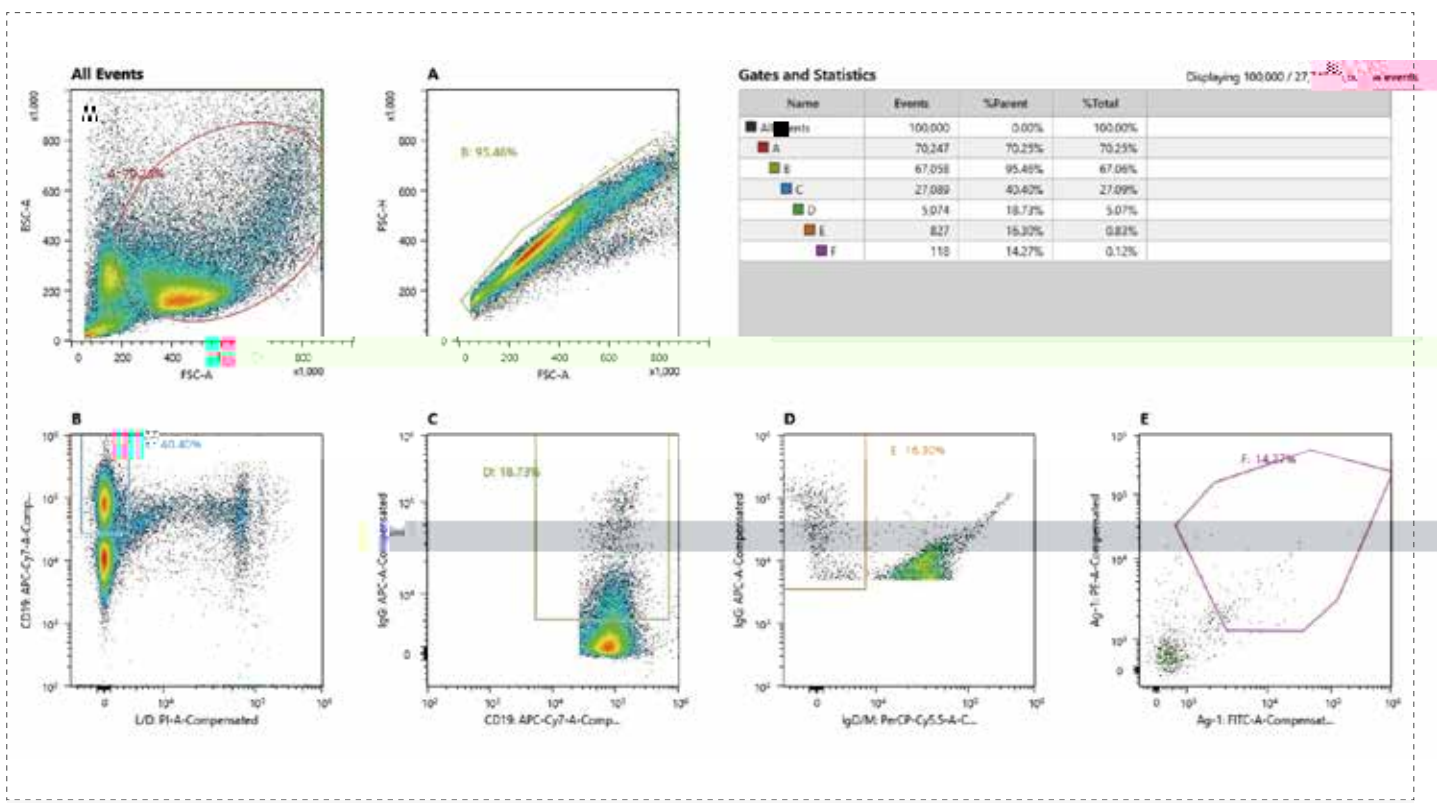
Nectin-4 (4-1) Sequencing (Top20)



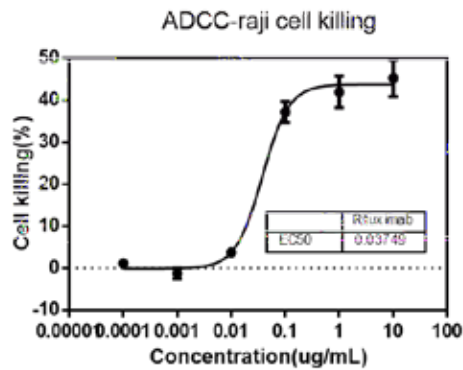
Nectin-4 (4-6) Sequencing (Top20)



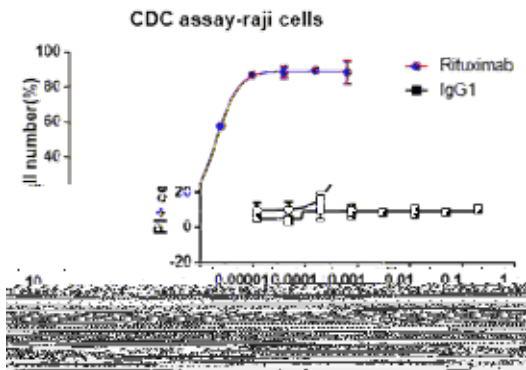
Nectin-4 (4-1) Sorting Single B Cell



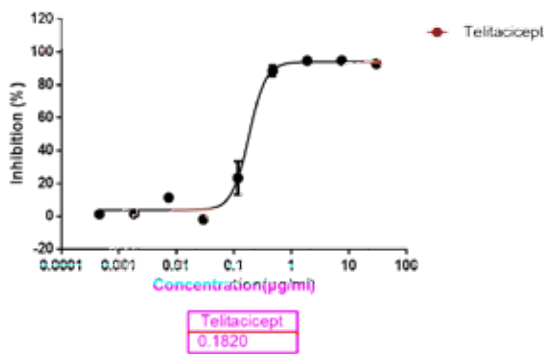
Nectin-4 (4-6) Sorting Single B Cell



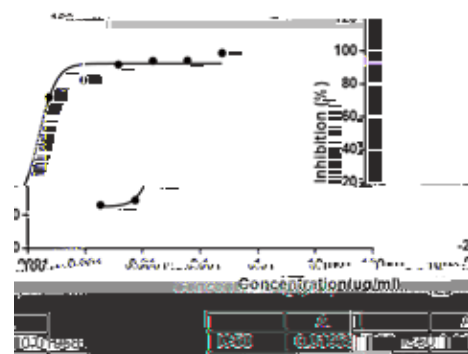
Raji cells were mixed with human PBMCs, and different doses of Rituximab was added to induce ADCC, the killing of raji cells were detected through FACS(CFSE labeling of raji).



Raji cells were mixed with human AB serum, and different doses of Rituximab was added to induce CDC, the killing of raji cells were detected through FACS(PI staining of raji).



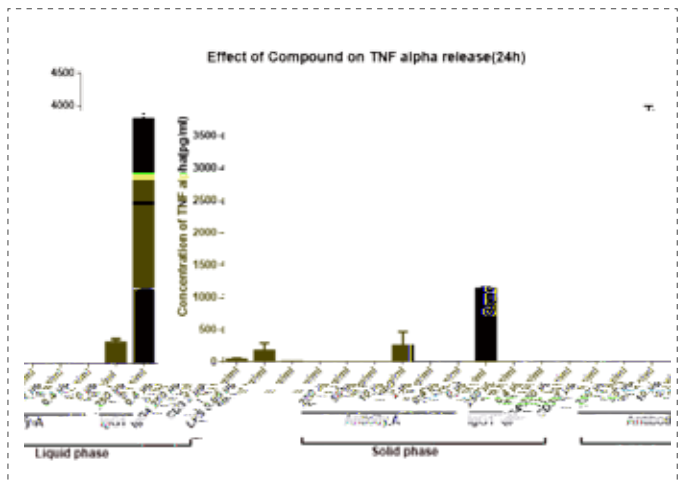
B cells were treated with Telitacept and induced with Baff for 72 hours, H3-thymidine incorporation were analyzed through scintillation counting.



T cells were treated with compound A and induced with ICOSL for 72 hours, H3-thymidine incorporation were analyzed through scintillation counting.

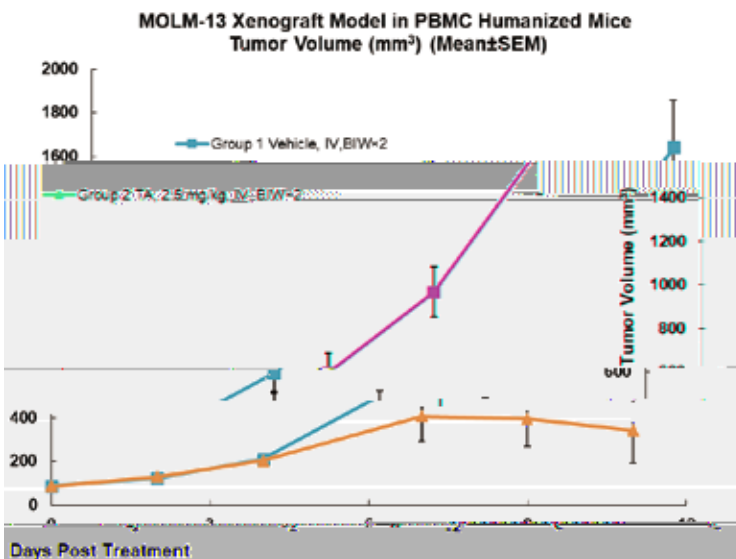


- A/IgG1 CD3/LPS PBMC 25
Luminex TNF
- ICH IL-2
IL-6 IL-10 IFN- TNF- PBMC
3 ELISA Luminex CBA
MSD OKT3
-



2022 2 LQ036— IL-4R () IND CDE LQ036
 LQ036 LQ036 NMPA TGA

: CD3+ Bispecific Antibody



- **Animals:**
Female NOG mice
- **Tumor Cells:**
Tumor mixed hPBMC (1:1) with 50% Matrigel, SC
- **PBMC:**
injected before tumor cells inoculation
- **Treatment:**
Bispecific antibody

Mean Tumor Volum (mm³) Day 14

Group	TV	%TGI _{TV}	Value
Vehicle	1639.53	/	/
An body	340.90	90.38	<0.001

/

PK

: Pharmacokinetics of YYB-101 in cynomolgus monkeys

YYB-101 10 mg/kg

T_{max} 2.5 (2.0-7.3) h (n=12) (V15BCT03) (J3E67B5)

Pharmacokinetic profile of YYB-101 in cynomolgus monkeys^[4]



YYB-101

50mg/kg

29 85

1

I

(NCT02499224)

BAT6021**BAT6005**

2021 9 BAT6021 BAT6005 BAT6021 BAT6005
 TIGIT BAT6021 BAT6005

BAT7104

2021 10 PD-L1/CD47 BAT7104 BAT7104
 PD-L1/CD47 PD-1/PD-L1 CD47/SIRP- BAT7104
 GLP BAT7104
 BAT7104

JYB1904

2022 5 IgE JYB1904 JYB1904 IgE
 JYB1904
 GLP JYB1904

CC312

2022 6 CD19/CD3/CD28 CC312 IND FDA
 CD28 CC312
 CC312 GLP

GT90008

2022 10 PD-L1/TGF- (GT90008) GT90008 PD-L1/TGF- PD-L1
 TGF- R2 GT90008 /
 GLP

HCW9218

2022 10 HCW Biologics Inc. HCW9218 FDA HCW9218
TGF- II IL-15/IL-15 NK CD8⁺ T
HCW9218 HCW GLP
HCW9218 SEND HCW9218 FDA

:

[1] Ivana Spasevska. An outlook on bispecific antibodies: Methods of production and therapeutic benefits.

[2] Abdullah F U H Saeed, et al. Antibody Engineering for Pursuing a Healthier Future. Front Microbiol. 2017 Mar 28;8:495. doi: 10.3389/fmicb.2017.00495.