

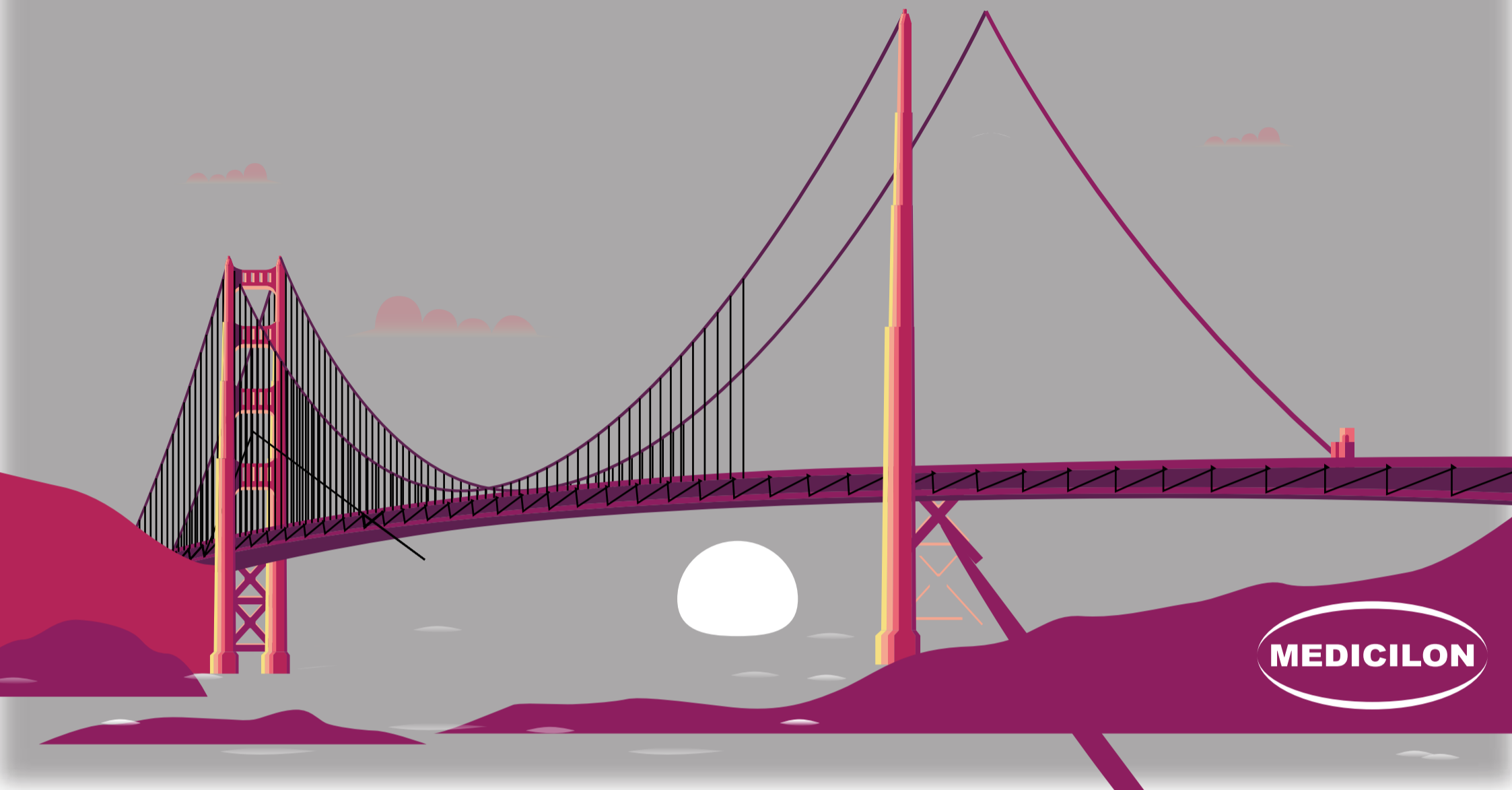
READ MORE

Mechanism

Key Features

Differentiation

Preclinical Highlights



Medicilon | ACCESS ASIA BD Forum @JPM 2026

The Blueprint: A Portfolio of Executed Programs

READ MORE

www.medicilon.com

- Headquarters: Wuh

15-PGDH inhibitor

- Headquarters: Wuhan, China
- Humanwell is one of the largest pain management specialty pharma in China
- Seeking for BD&L and partnership opportunities with leading global biopharmaceutical companies in treating CNS, respiratory, and autoimmune disorders

MRGPRX2 antagonist

A novel IgE-independent anti-inflammatory agent inhibiting mast cell degranulation
Wide safety margin, significantly enhanced safety profile vs. Incyte EP262 (POC MRGPRX2 antagonist)
Oral bioavailability and long half-life support the potential for once-daily(QD) dosing regimen
Broad therapeutic potential across multiple allergic & inflammatory indications

Dose-response analysis confirms IC_{50} in nM range for Calcium Flux inhibition
HW281171 exhibits favorable pharmacokinetic properties

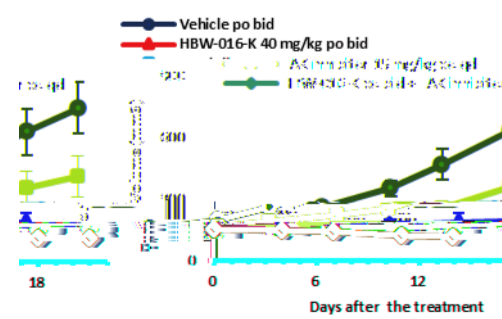
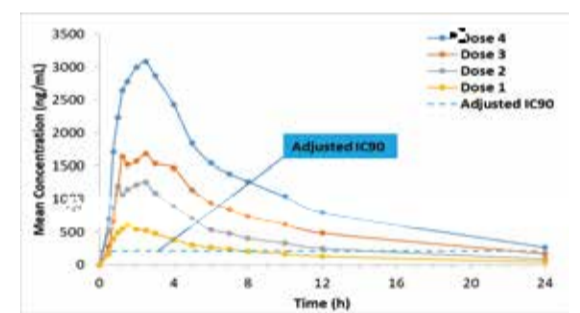


P2X3 receptsm.2912.828 0bTm(P)T21.531 0el



Sigma-1 receptor antagonistip



















Mechanism:

Molecular glues and bifuncti

Targeting and degradation of the protein in the cytosol and nucleus. The protein is targeted to the nucleus by a nuclear localization signal (NLS) and is degraded by the proteasome. The half-life of the protein is approximately 1.07 hours.

Overc



Category	Program	TA	Target/ Modality	Geography	Discovery	Preclinical	Phase I	Phase II	Phase III
ADC	ILB-3101	Oncology	B7H3-Eribulin ADC						
	ILB-3103	Oncology	DLL-3×B7H3 FIC BsADC						
	ILB-3203	Oncology	PD-L1×VEGF FIC BsADC						
IO	ILB-2109	Oncology	A2aR/Small molecule						
	ILB-2101	Oncology	CD40 Agonist mAb						
	ILB-2201	Oncology	PD-L1/VEGF BsAb						
Auto-immune	ILB-2107	Auto-Immune Diseases	OX40 antagonist						
	ILB-2110	Auto-Immune Diseases	PD-1 agonist mAb						
	ILB-2202	Auto-Immune Diseases	PD-1 Agonist/TN						
									

Headquarters: China

RabPharma Co., Ltd. embraces a diverse range of collaboration models. These include

and

focused on novel bone and joint therapies.

An overview

is a clinical-stage company dedicated to the research and development of innovative drugs for the treatment of bone and joint disorders, addressing unmet medical needs for effective treatments in

This innovative therapeutic approach utilizes double-targeting technology, particularly Bone-targeted Peptide Drug Conjugate, to warrant high drug concentration at the bones, thereby minimizing off-target effects.

On-going Phase II clinical trial for osteonecrosis; Phase III will start in late-2026.

IND submission to CDE for Phase Ib clinical trial for the osteoarthritis, which will start in mid-2026.

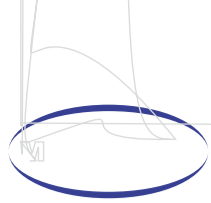
Strong IP portfolio across the US, China, Japan, and EU, ensuring long-term market potentials.

Leading drug candidate

coc -induced osteoporosis and osteonecrosis in mouse

In





- Headquarters: Lunan Pharmaceutical Group, China
- Dedicated to the research and development of mAbs, ADCs, TCEs and fusion proteins for treatment of oncology, immune and chronic diseases.
- Seeking for partnership for clinical development (licensing, co-development and/or collaboration) of biologics.

Robust pipeline



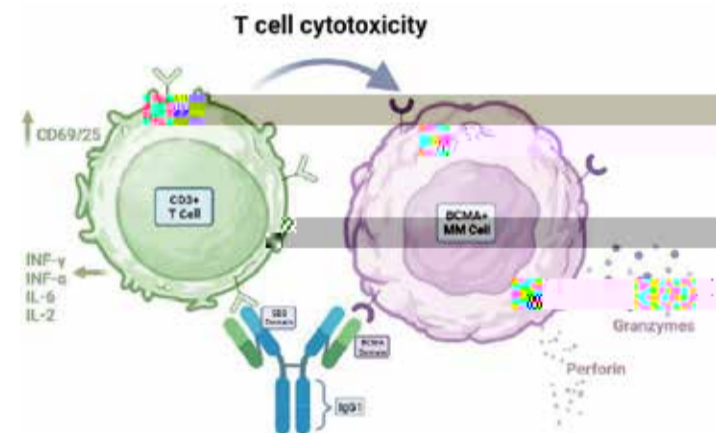
SAFETY AND EFFICACY OF F182112 IN PATIENTS WITH RRMM

A bispecific T-cell engaging antibody that binds to CD3 receptor expressed on the surface of T-cells and BCMA expressed on the surface of multiple myeloma cells.

NCT04984434.

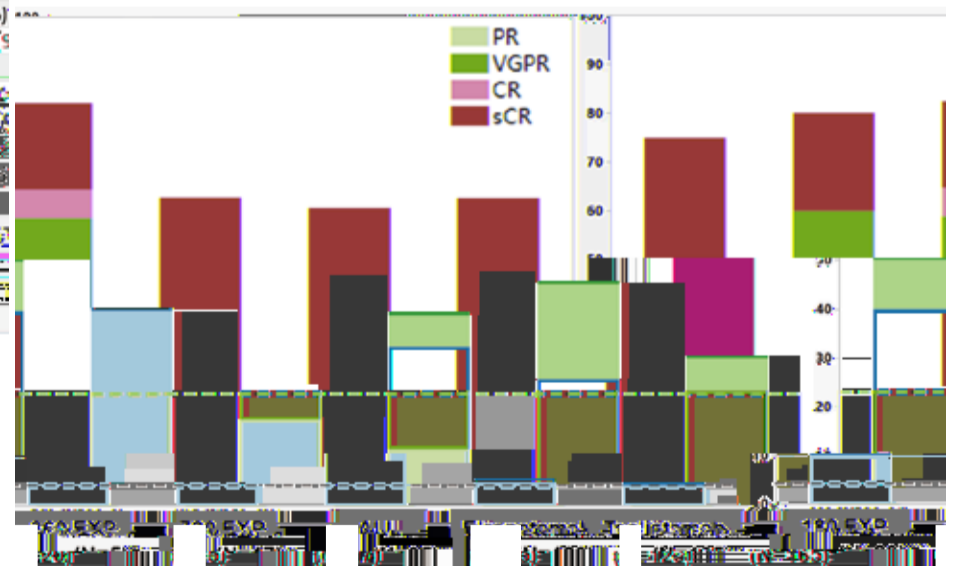
F182112-001

The most common TRAEs were CRS. All CRS events were Grade 1 or 2.



Adverse Event	All grade	Grade 3	All grade	Grade 3	All grade	Grade 3
Any adverse event (TEAE)	123 (100)	87 (70.7)	107 (99.70)	100 (92.59)	165 (100)	156 (91.52)
Hematologic (≥20%)						
Neurotoxic event	0	0	2 (1.93)	0	24 (14.5)	0 (0.0)
Infections and infestations	26 (69.9)	48 (39.8)	91 (75.7)	46 (42.98)	125 (76.4)	74 (49.8)
Tumor lysis Syndrome	1 (0.83)	0	0	0	0	0

The ORR of F182112 180 µg/kg dose was 75%. 65% achieved at least a VGPR and were evaluable for MRD. The median PFS was 11 months.



Zovag

An

- Headquarters: Shenzhen, CHINA
- Committed to the discovery and development of Oral Cyclic Peptide PCSK9 Inhibitor
- Seeking for partnership for clinical development (licensing, co-development and/or collaboration) of Oral Cyclic Peptide PCSK9 Inhibitor SG-6001

Cyclic Peptide

Cyclic peptides are engineered, ring-shaped peptide molecules designed to combine the target specificity of biologics with the oral delivery of small pills. While achieving effective oral absorption remains a formidable engineering challenge, advances in chemistry and design are making them a rapidly emerging and exciting class of modern medicines.

SG-6001 and SG-6002 are two prominent and advanced examples of oral cyclic peptides currently in late-stage clinical development. They illustrate how this technology is being applied to different chronic diseases where patient-friendly oral dosing can be a significant advantage.

Lead Program – SG-6001

Treatment of hypercholesterolemia in adults to lower low-density lipoprotein cholesterol (LDL-C) Td-15

Picomolar potency
 Orally bioavailable in rat, dog and monkey
 High efficacy in hamster and monkey via oral dosing
 Preclinical studies on going
 IND planned for 2026





Innovation for Health

- Headquarters: Chongqing, China
- A platform biotech, committed to providing high quality recombinant biological drugs with better efficacy and more affordability to patients in need
- Seeking for partnership for clinical development (licensing, co-development and/or collaboration) of PN20 (PJ004).

Tandem Expression of PEPs (TE-PEP®) Platform

- to support tandem expression of 4~8 target peptides in one expression vector, then cleaved by specific enzymes during harvest;
-

-
- Headquarters: Chengdu, China
 - C



- Headquarters: Nanjing, China
- Committed to the discovery and development of synthetic lethality for the treatment of oncology
- Seeking for partnership for clinical development (licensing, co-development and/or collaboration) of ATRi.

Synthetic lethality

a genetic phenomenon where the combined disruption of two non-lethal mutations leads to cell death, but each mutation alone is viable.

Dual non-lethal gene disruption: Two independent, non-lethal genetic alterations or mutations, when combined, result in cell death

Genetic redundancy exploitation: Relies on the failure of compensatory pathways in cells with pre-existing mutations (e.g., BRCA-deficient tumor cells).

Competitive ADCC (antibody-dependent cell-mediated cytotoxicity)

Selective targeting: Specifically kills cells with genetic defects while sparing normal cells with intact pathways.

2024 Program - YY2201

YY2201 shows better ATR Enzyme inhibition activity than AZD6738 and BAY1895344.

YY2201 showed better anti-cancer activities than AZD6738 in vitro in Prostate cancer, Breast cancer, and Ovarian cancer cell lines.

YY2201 showed better anti-cancer activity and lower in vivo toxicity than AZD6738 in NSCLC CDX model.

YY2201 showed lower toxicity than AZD6738 in Colorectal cancer CDX model as it had little effect on the weight of mice.

YY2201 demonstrates a suitable therapeutic window compared to other drugs targeting the same pathway.

YY2201 has a half-life of approximately 4 hours, which is longer than that of other drugs in the same class targeting the same therapeutic site.

YY2201 has received regulatory approvals for clinical trials from both NMPA(CXHL2400631) and FDA(IND173030).

The Phase I clinical trial in China commenced in Q3 2025

Objective: Evaluate the safety and preliminary efficacy of YY2201 in patients with solid tumors and identify responsive tumor types.



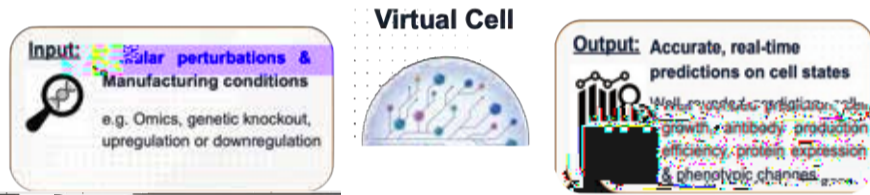
Revolutionize Biomanufacture – CelMo™: A virtual cell model for cellular control with tunable precision

Introduction

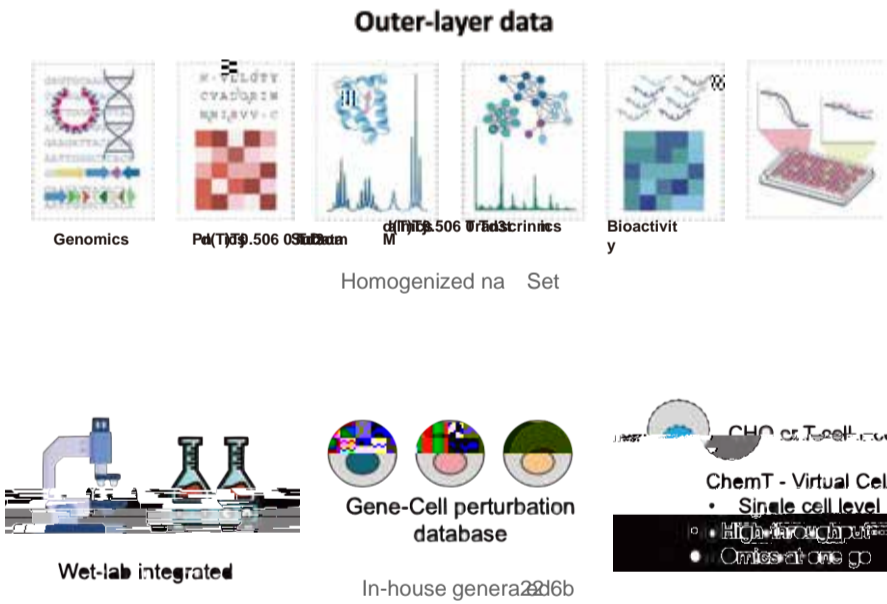
In Biomanufacturing, increasing productivity without triggering stress, metabolic imbalance, or quality drift remains a major challenge. **CelMo™**, our AI-driven Virtual Cell platform, addresses this by integrating multi-omics data with large-scale literature mining to identify high-value, druggable, and novel control points in cell biology.

CelMo™ models how cells respond to different nutrients, stresses, and perturbations, revealing levers that improve viable cell density, productivity, and metabolic stability. This enables gene target discovery and molecule design to act on the targets that deliver higher, more consistent, and scalable performance across manufacturing systems — keeping cells in an optimized productive state without changing production by a new cell line, cell line gene editing, or cell adaptation.

Method



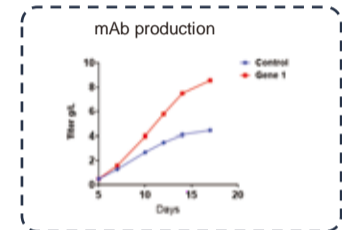
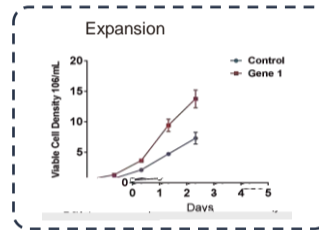
CelMo: A Virtual Cell Platform For Target discovery and “Drug for Cell” generation



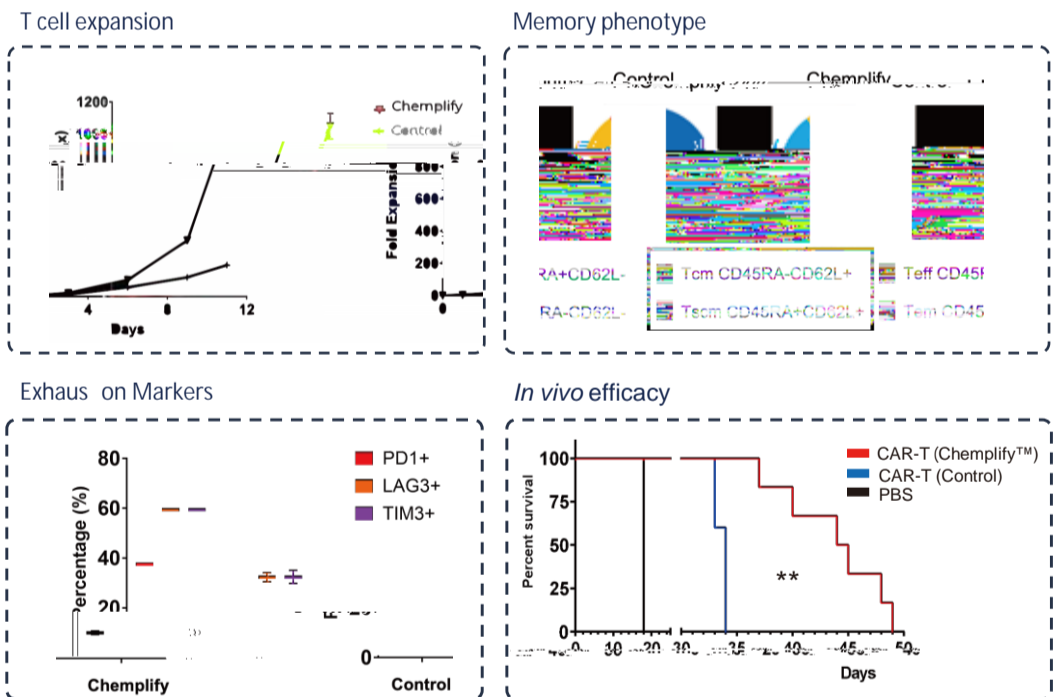
Output

Gene

Knockout Type	Gene(s) Knocked Out	Predicted Effect	Likelihood Score	Shortlisted
Single Gene	Gene 1	BCAA, mTORC1, productivity	0.72	Yes
Single Gene	Gene 2	BCKA, redox efficiency	0.55	No
Single Gene	BCAA import, mTORC1	0.43	No
Double Gene	Gene 1 + Gene 2	BCAA retention, productivity	0.84	Yes
Double Gene	cytosolic BCAA, mixed effects	0.68	No



Case 2: Chemplify™ designed by CelMo enhances T cell productivity, quality, and efficacy



Chemplify™ is a small molecule product designed by CelMo, with novel mechanism that addressing T cell senescence, a universal challenge with limited solutions. Chemplify™ has been widely adopted by leading T cell companies, CDMOs, and hospitals.

Summary

- Headquarter: Chengdu, China
- A clinical-stage biotech company focused on developing pan an - r pep des through novel TGF- technology
- Seeking for investment and partnership for clinical developmenn ic

CD36 Deriva Pep orm

CD36[93-110] is a sequence of human CD36, a functional domain with the ty at the domain scale. CD36[93-110] is responsible for CD36 and L-TGF- -TSP-1 binding, and this interac on directly releases the Ac ve TGF- .

Through modula ng Ac ve TGF- 1, **CD36⁹³⁻¹¹⁰** mo f is a promising candidate for trea ng Fibr Diseases, In mmatory and Cancers.

- Headquarters: Nantong, China
- Mission: To discover and develop therapies for unmet medical needs. Primarily focusing on the development of novel bispecific antibody constructs to better treat a wide spectrum of medical conditions ranging from cancer to autoimmune disease

Company Introduction

n

tnannrnn

traaaat

Superior efficacy than approved IL-1 neutralizing drugs
 Enhanced efficacy and reduced systemic exposure
 Manufacturing process development completed
 Optimal PK profile in rodents and NHPs
 No signs of toxicity observed at 150 mg/kg in monkeys
 Optimized half-lives of two binding moieties to balance efficacy and side effects, supporting Q4W dosing
 Potential treatment for rheumatoid arthritis

- Headquarters: Kaifeng, China
- To develop innovative, targeted therapies for STAT3-driven cancers
- Seeking partnerships for clinical development, co-development, or licensing opportunities.

Mechanism:

Direct STAT3 SH2 domain binding: High-affinity interaction inhibits phosphorylation at both Tyr705 and Ser727.

Broad-spectrum anticancer activity: Effective against multiple solid and hematological tumors, including resistant models.

Favorable safety profile: Preclinical studies show tumor regression at low doses with minimal toxicity to normal tissues.

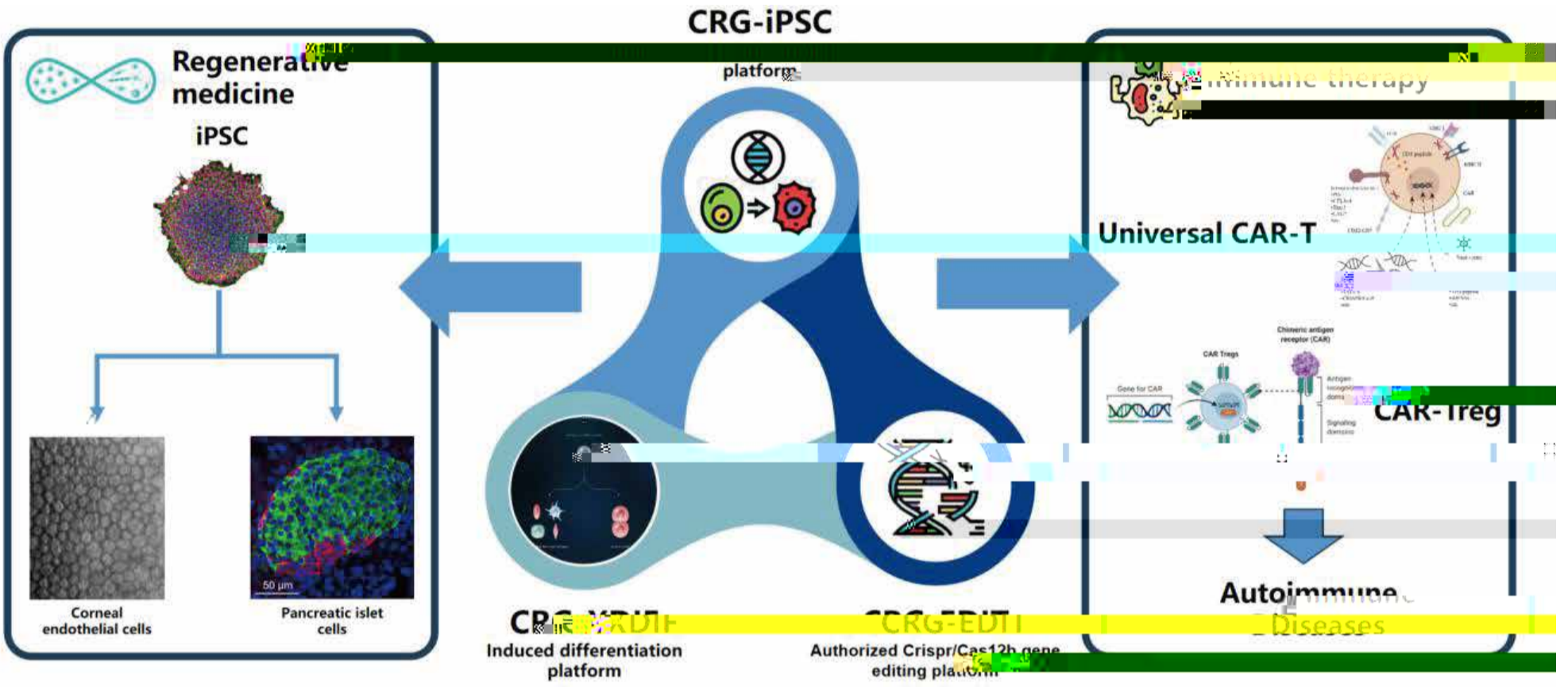
Broad therapeutic potential: Active across a wide range of malignancies with high unmet need.

Overcomes resistance: Effective in EGFR-TKI resistant and chemotherapy-resistant agents.

r

-
- Headquarters: Basel, Switzerland
 - focus on innovative treatments for patients with severe ophthalmic and neurological diseases.
 - Seeking for partnership for clinical development (investment, licensing, co-development and/or collaboration) of SBC003.

Lead Program – SBC003





* Headquarters: Guangzhou, China

* Dedicated to the discovery and development of therapeutic antibodies for cancer, cardiovascular, autoimmune and other diseases.

* Seeking for partnership for clinical development (licensing) of Secukinumab, Mepolizumab and Pembrolizumab

Secukinumab (an anti-IL-17A monoclonal antibody) can be used to treat plaque psoriasis, psoriatic arthritis, ankylosing spondylitis, and hidradenitis suppurativa.

* Moderate evidence

